








# ANNUAL REPORT

**2017-18**





## Contents

	<b>From the Founder Director's Chair</b> .....	<b>03</b>
	<b>Our Identity: About Us</b> .....	<b>04</b>
	<b>Highlights of the Year</b> .....	<b>05</b>
	<b>Services &amp; Projects</b> .....	<b>06</b>
	<b>Special Edge</b> .....	<b>06</b>
	Partnerships.....	<b>07</b>
	Socio Emotional Learning (SEL) integration in Special Edge.....	<b>11</b>
	<b>Pathways – Vocational Training Program</b> .....	<b>12</b>
	<b>School</b> .....	<b>15</b>
	<b>Therapy</b> .....	<b>17</b>
	<b>The Red Flag Project</b> .....	<b>18</b>
	Expert Committee Meet.....	<b>18</b>
	Participating Organizations in the Expert committee meet.....	<b>19</b>
➔	<b>Moving forward into 2018-19</b> .....	<b>20</b>
	<b>The Red Flag Project</b> .....	<b>20</b>
	<b>Special Edge</b> .....	<b>20</b>
	<b>Pathways – Vocational Training Program</b> .....	<b>20</b>
	<b>Other Partners</b> .....	<b>21</b>
	<b>ITM</b> .....	<b>21</b>
	<b>Life Skills Academy Program</b> .....	<b>21</b>
	<b>Volunteer Speak &amp; Employee connect</b> .....	<b>22</b>
	<b>Financial Performance</b> .....	<b>23</b>



Every Child **CAN** Learn...  
Just not on the same day  
or the same way!

**Sonali Saini**  
Founder Director

### **A Dream becomes Reality!**

*Everything that we have been working towards since the past three years is now becoming a reality. Since 2013 when we first rebuilt our vision of "No Child Left Behind" the vision has started taking shape in real world.*

*2016-2017 has been a year of shift for Sol's ARC. From reaching out to 6000 children in Mumbai in the past 13 years to now reaching out to 25000 children in Rajasthan and Maharashtra in 2016-17, this journey has been anything but easy. A new vibrant team has joined Sol's ARC. The project which was earlier called QUEST is now renamed as Special Edge implying principles of special education being used for achieving an edge in learning. Its been a year of learning and relearning and learning and relearning.....and we know we can and we will transform education by reaching out to the very last child.*

*A strategic plan for the next 3 years, 2017-2020 has been drawn out with the help of experts. Sol's ARC aims to reach 1 million children through strategic partnerships by the end of 2020.*



## Our Identity

## About us

Sol's ARC is a registered non-profit organization established in 2003, under the Charitable Trust Act of Mumbai, working towards transforming education. We conduct innovative education research to build inclusive learning content, ensuring every child can learn and that our innovation will reach the last mile.



**Our Journey:** Remains same



**Mission:** Universalize educational opportunity for all children in India, through appropriate research based inclusive pedagogy, training & delivery.



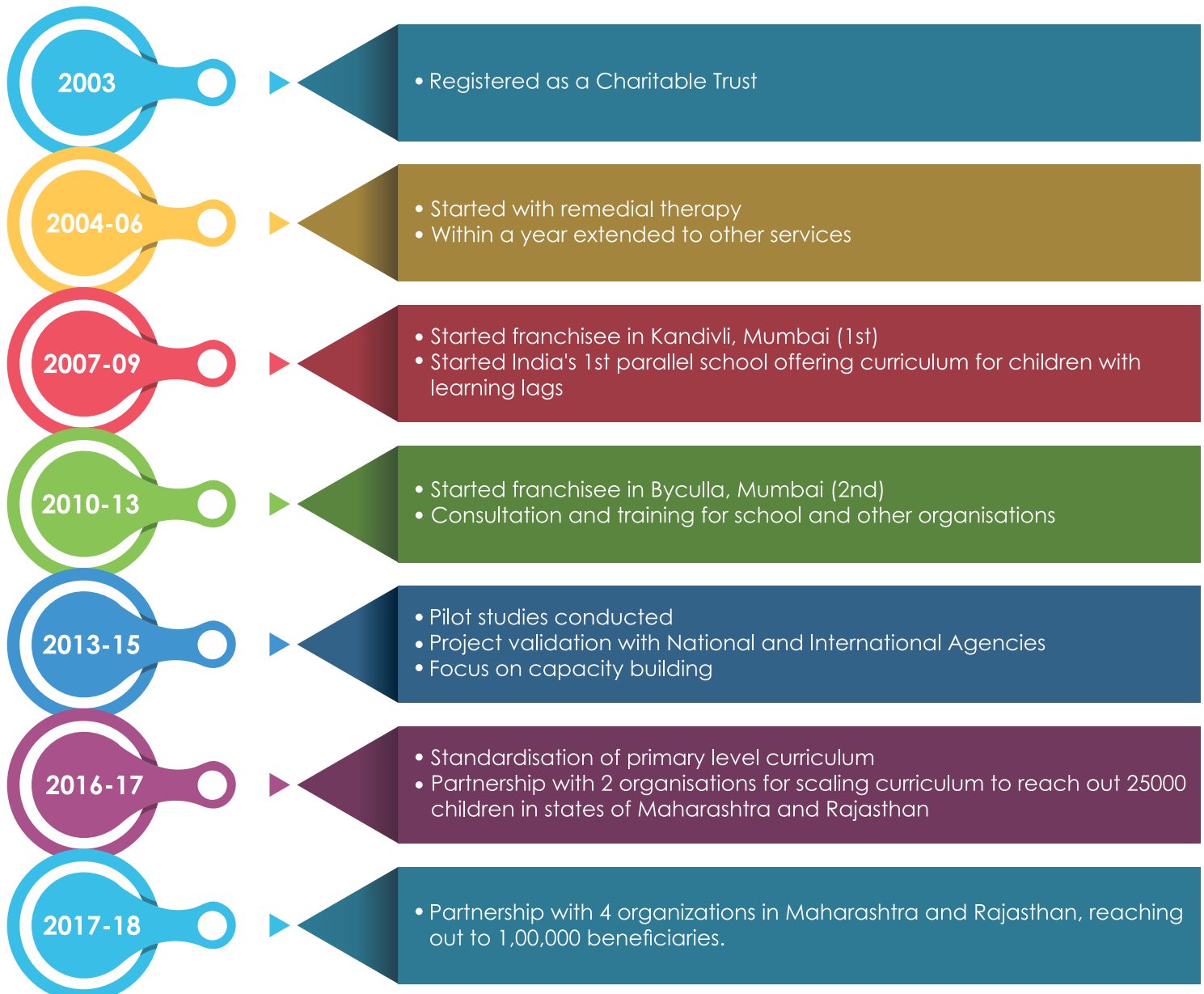
**Vision:** Every Child can Learn



**Goal:** To create a scalable replicable model to reach every last child.

## Presence in India: Maharashtra, Rajasthan and Madhya Pradesh Reach – 100,000 Children reached through partnerships

### OUR JOURNEY





## Highlights of the Year

### **The Team Balika Training:**

The Master trainers of Educate Girls training the Team Balika. The program will be built by Sols Arc which will start in more than 6000 schools in Rajasthan and MP this year!

### **Life Skills Academy Program:**

Introduced life skills training for special needs adults, in collaboration with Monarch Institute, USA. The organization facilitates special needs adults by organizing meetings with a life coach on a regular basis and reviewing their progress towards their goals.

### **Sensitization & Awareness Workshop:**

Sol's Arc organized various awareness workshops over the year for parents, students and staff. These include:

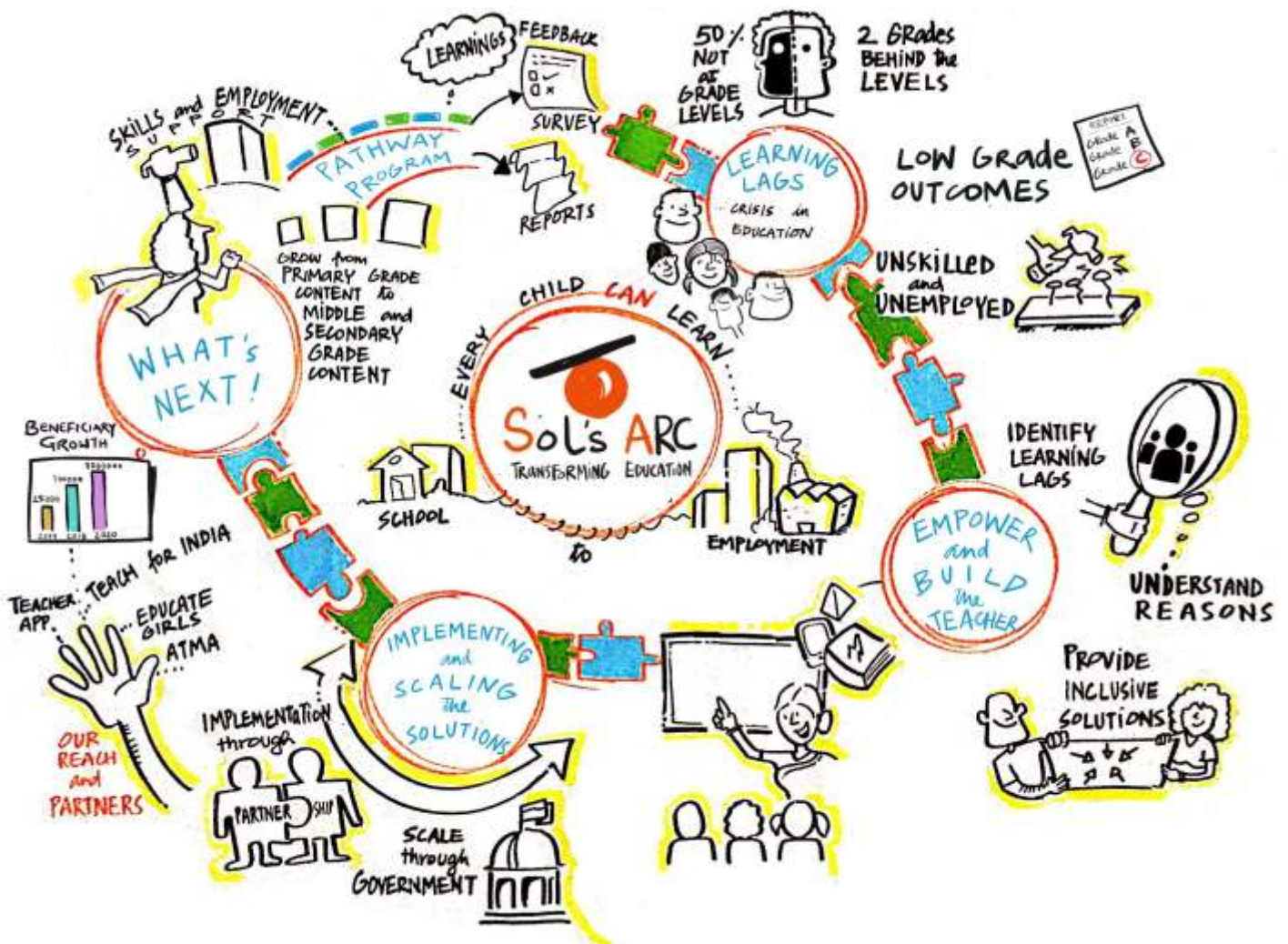
- Independent Travel Training for adults with special needs
- Cyber Safety Workshop for adults with special needs
- Child Protection Policy

### **Pathways Paper Presentation at International Autism Conference:**

Ms. Poonam Nair, Vocational Head at Sol's Arc, received an overwhelming response on her paper on Pathways program.



In 2017-2018 Sol's Arc has partnered with 4 organizations to reach out to more than 1,00,000 children in Rajasthan and Maharashtra.



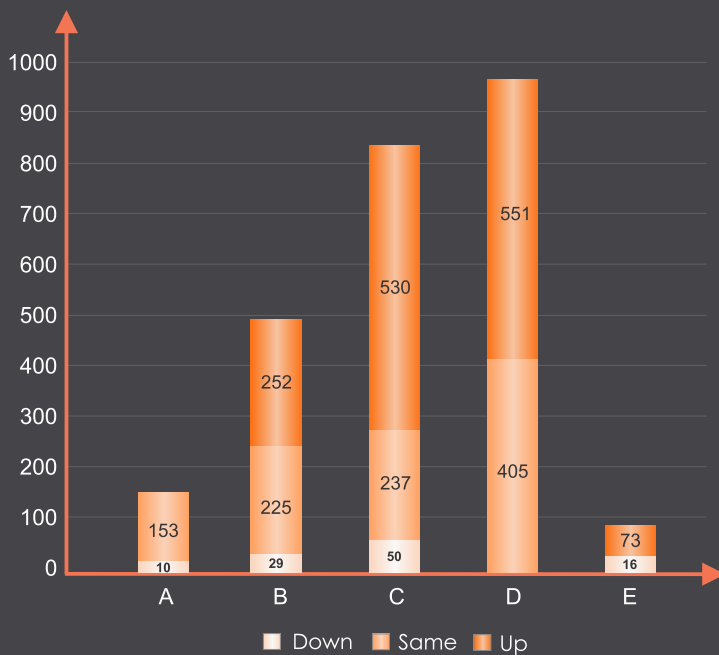


### Educate Girls

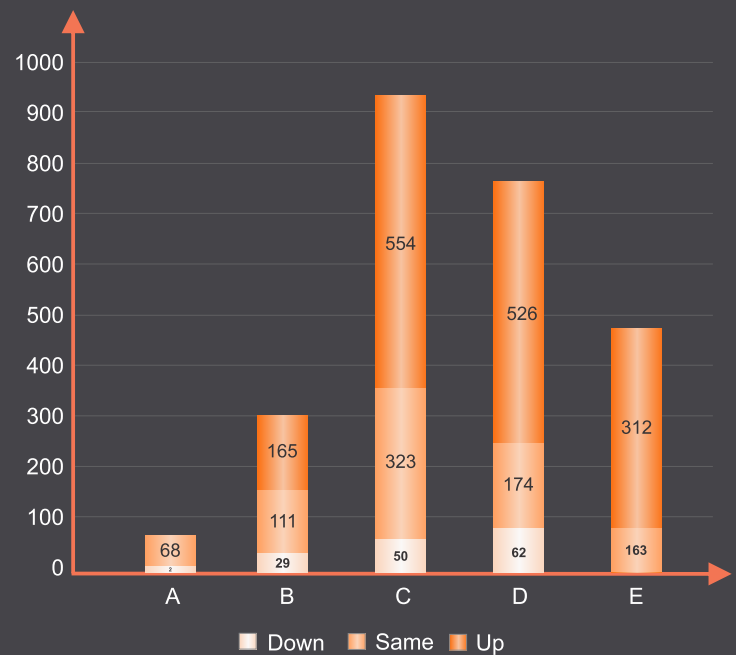
Sol's Arc through its partner Educate Girls, is a part of **Development Impact Bond (DIB)**, and is responsible for learning outcomes of 18000 children in rural Rajasthan. UBS Optimus Foundation is the investor and ID Insight is the outcome evaluator. Through this project we became a part of the world's first Development bond in education.

The **Development Impact Bond (DIB)** is a pioneering new way to encourage private investors to fund international development projects that is 100% focused on the outcomes achieved. It is the first-ever development impact bond that aims to create a 'proof of concept', showing potential donors and investors how DIBs could contribute to societal gains while also offering financial returns. The internal results show the following,

Student movement by Grade - Math



Student movement by Grade - English



1.75% students improved their learning levels and moved to upper grades.

2. Overall student grade gain improved by 61%.

We await the third-party evaluator results by May 2017. To know more

visit <http://instiglio.org/educategirlsdib/>



## Services & Projects

Special Edge > Partnership







### Cluster Partners in association with Atma

Sol's Arc partners with Atma who provide strategic solutions to help education NGOs scale. Atma works on improving quality and access in education. We work with Atma partners under a special needs cluster thus catering to over 150 children with disabilities. Sol's ARC provides an inclusive curriculum based on the National Curricular Framework, provides training for teachers while Atma provides capacity to be able to implement, measure and monitor the program. The cluster consists of one Mainstream school, Spark A Change and two dynamic special needs schools- Little Hearts and Anandi.

Spark A Change mission is to ensure transformational change in school going children from low income background by providing them with knowledge, values, skills and support through joyous, positive experiences from interaction with well-intentioned educated adults to help them excel.

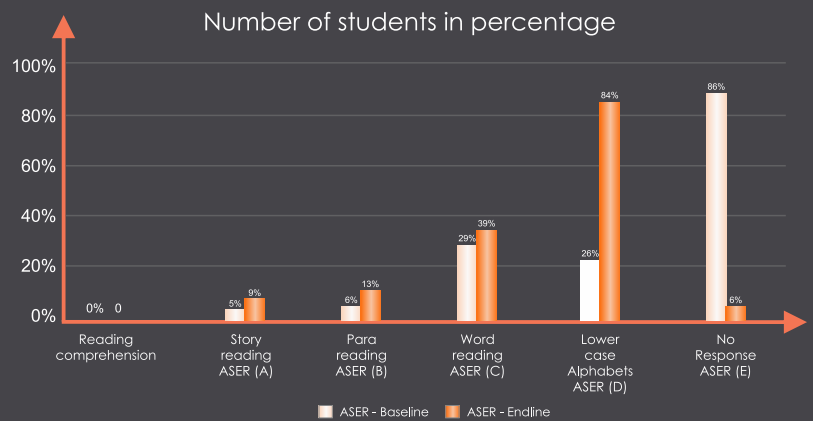
Little Hearts and Anandi work on improving the lives of children with a range of disabilities like Autism, Cerebral palsy, intellectual disabilities, learning disabilities etc. Little Hearts works with an inclusive lens by preparing and integrating children into mainstream schools.

Special Edge being inclusive provides a structure, sequence and measurement to a sector where everything is undefined and not measured against norms. This creates a clear pathway for children to be able to be mainstreamed and integrated once they move on the spectrum of defined skills along with progressing on their individual needs at their pace and ability.

Special Edge implementation was initiated with the cluster partners in association with ATMA in June 2017, completing one year of learnings in April 2018 through this program. The results are as under, giving the average baseline and endline scores captured at the start and the end of the year subject wise.

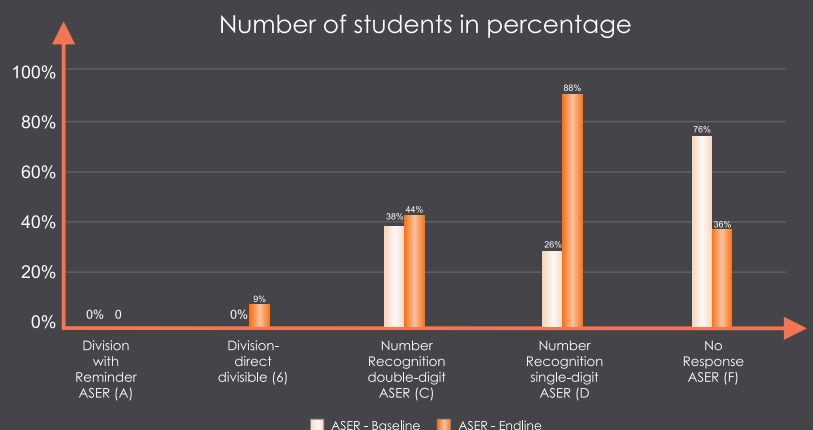
### English – Baseline Endline comparison

The percentage of students at the No Response level has considerably reduced from 86% to only 6% of the total students. This is an indicator that the students in one year have moved from not knowing or being able to answer, to learning and responding. Similar progress can be noticed in word reading and Lower case Alphabets levels.



### Math – Baseline Endline comparison

The percentage of students at the No Response level has considerably reduced from 76% to 36% of the total students, indicating increased learning levels in these students. Similar progress can also be noticed at Number Recognition Single-Digit and Number Recognition Double-Digit levels.





Partners Till 31<sup>st</sup> March 2018

1. Educate Girls
2. ATMA
3. Spark a Change
4. Little Hearts Special School
5. Anandi Special School
6. Jaivakeel Foundation and Research Centre
7. ICMH
8. Aseema
9. St. Catherine of Siena school and orphanage

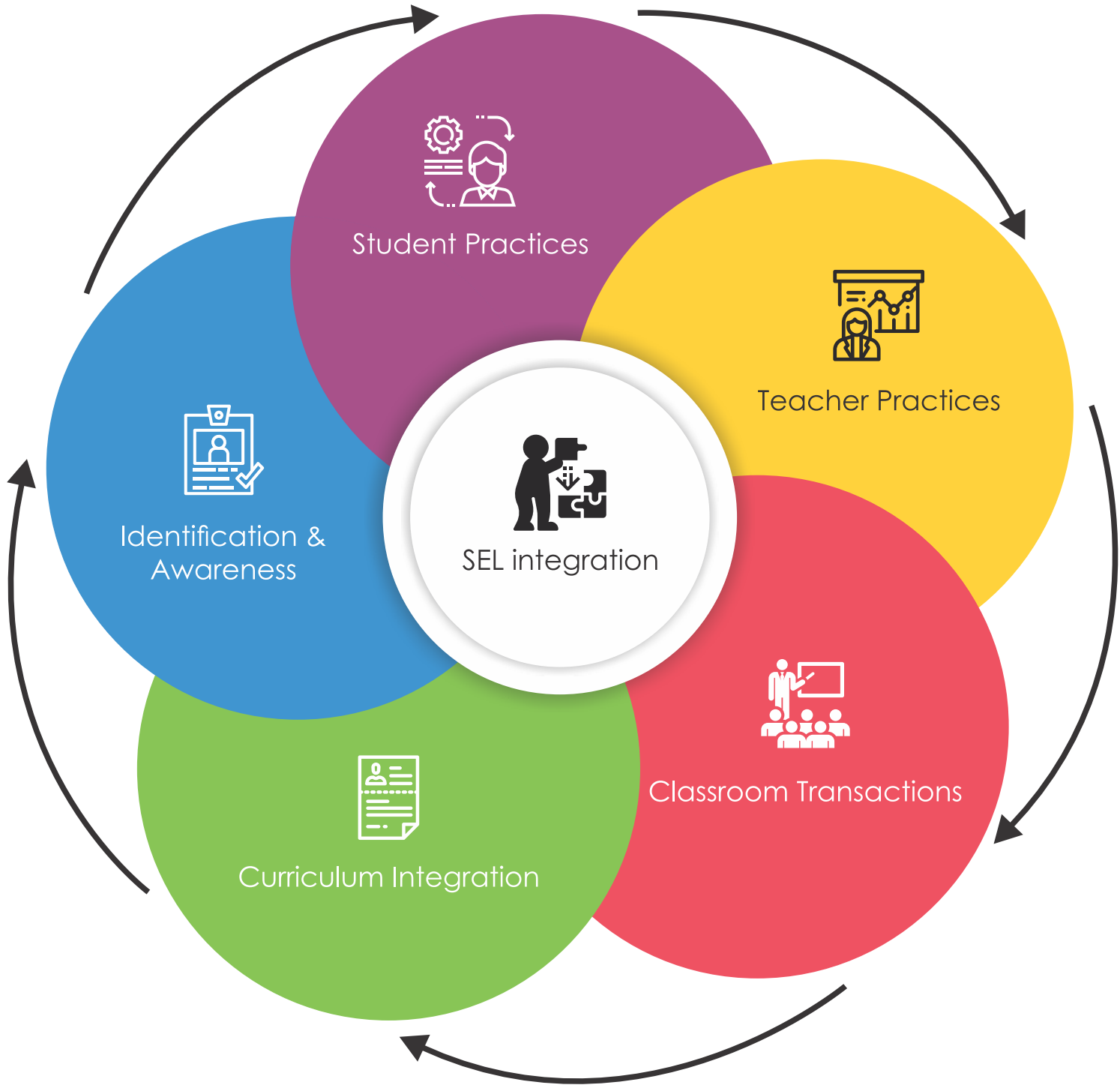


Little Hearts  
Learning Centre





Primary and secondary research to understand how SEL can be integrated in learning. While the development began as only curricular integration it is now extended at multiple levels in the program. The curriculum will begin piloting from June 2018 with our partners.





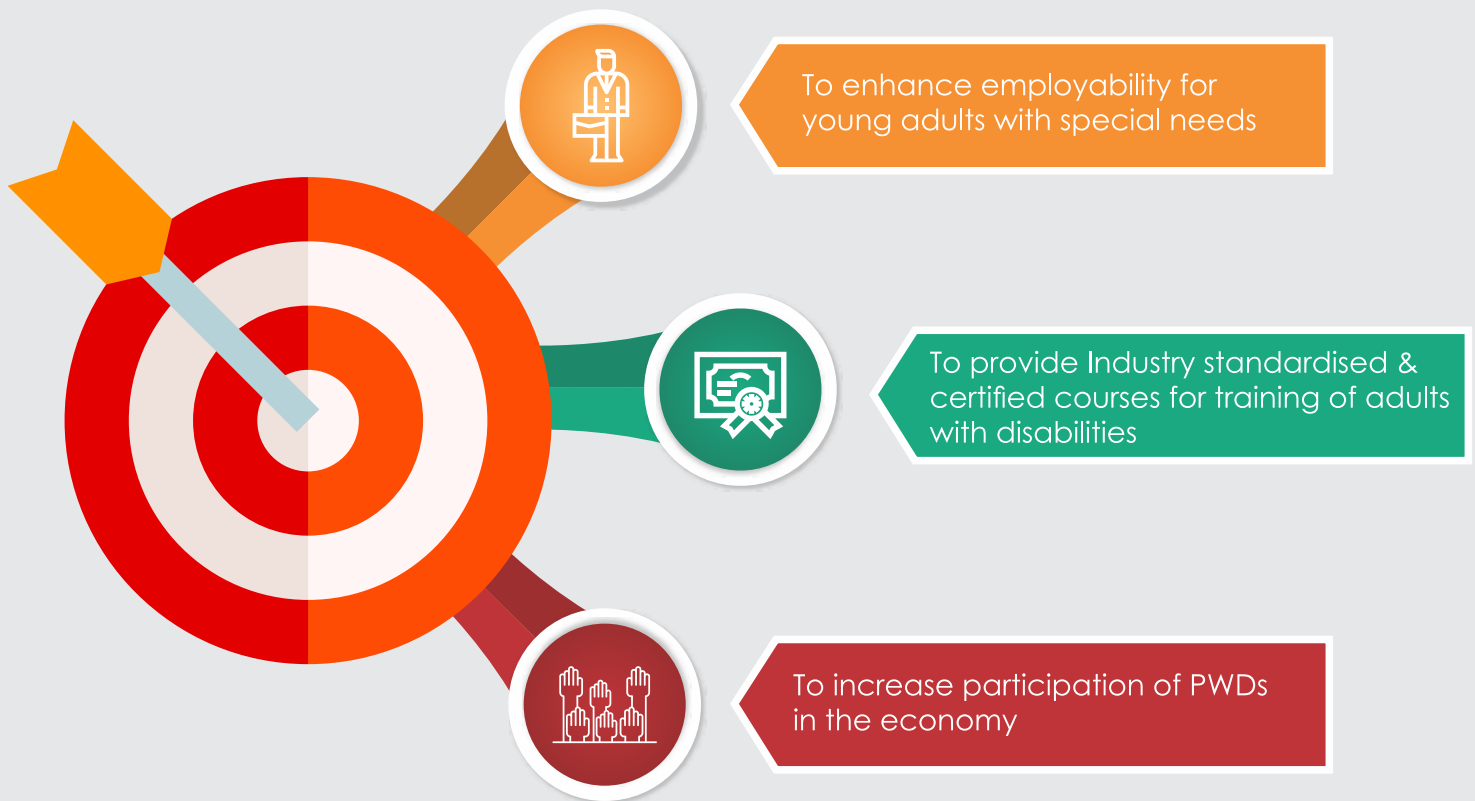
## Services & Projects

### Pathways > Vocational Training Program

Pathways is a 3-year Associate Vocational Degree Program with academic and industry certification, providing a career path for young adults with special needs. Through this vocational skills program, adults with disabilities are offered unique opportunities to gain skills, thus creating livelihood opportunities leading to increase self-esteem and personal autonomy.

Sol's ARC recognizes the importance that improving vocational training and employment opportunities for adults with special needs is critical element for enhancing their quality of life, their families but there are also substantial gains to broader economy.

### Objective of the program:



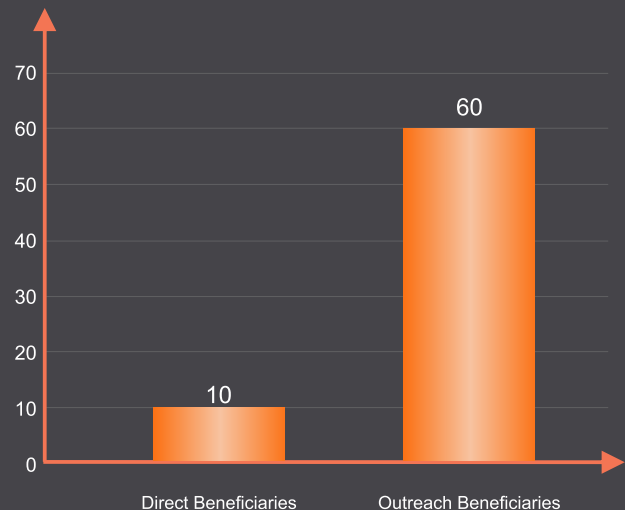
### Beneficiaries Reach

Since project inception in June 2017, Pathways program has benefitted directly & indirectly approximately 60 adults with developmental disabilities across Mumbai region.

The pathways beneficiaries come from varied background. They comprise of :

- Young adults (age 16+) with developmental disabilities (e.g. autism, intellectual impairment, borderline intellectual functioning, learning disabilities etc.)
- Students from all socio-economic background
- Girl Child

Pathways Outreach : First year 2017-18





## Services & Projects

Pathways > Successful 1st pilot year 2017 - 18 journey at glance

**May 2017** – Job mapping for Food and hospitality sector with Sodexo, Yellow Chilli Restaurant and Lilavati hospital.



**May 2017** – Sol's ARC faculty underwent training Food & hospitality training at ITM.



**June 2017 : Pathways launch** - Sol's ARC launched first batch of Pathways on 5th June, 2017.



**June 2017 : FOOD & HOSPITALITY SECTOR – PARTNERSHIP WITH ITM**, Sol's ARC partnered with Institute of Technology Management (ITM) to provide an industry certified hotel management courses training to young adults with special needs.



**August 2017** – Field trip to McDonalds to enable students gain awareness about different aspects of food & hospitality.



**September 2017** – Sol's ARC hosted a free workshop for parents on Independent travel training for adults with special needs.



**January 2018** - Ms. Aradhana, Vice President – Sustainability initiatives from Lemon tree visited Sol's ARC on 22nd Jan, 2018 to see training of students in Food industry.



**February 2018** - INFORMATION TECHNOLOGY – PARTNERSHIP WITH HRISHI COMPUTER EDUCATION, Sol's ARC has partnered with Hrishi Computer Education, an IT education institute based in Mumbai for providing Government certified IT courses to the Pathways trainees.



**February 2018 - Pathways Paper Presentation at International Autism Conference** - Ms. Poonam Nair (Vocational Head) presented paper on 24th February, 2018 on Pathways program in the International Conference organized by SOPAN trust.



**March 2018** – Introduction of IT sector. Computer lab set up for students



## Services & Projects

### Pathways > Pathways Partners

Sol's ARC partners with various Government/Non – governmental organisations, corporates, mainstream school, special schools, academic institutes/colleges to develop and offer inclusive learning materials and methodology to address needs of young adults with special needs. Below are our partners for each industry:

#### FOOD & HOSPITALITY SECTOR

##### ▶ ITM Institute

Sol's ARC has partnered with Institute of Technology Management (ITM) for providing industry specific training to adults with special needs especially those with intellectual challenges in Food and Hospitality sector.



##### ▶ Lemon tree hotels

Sol's ARC approached Lemon Tree hotels as potential industry partner for job placements of adults with special needs.



##### ▶ Job mapping partners for Food & hospitality industry

Sol's ARC conducted job mapping process to identify various job roles for special needs adults in food and hospitality sector. This process was conducted with following mapping partners:



#### INFORMATION TECHNOLOGY

##### ▶ Hrishi Computer Education

Sol's ARC has partnered with Hrishi Computer Education, an IT education institute based in Mumbai for providing Government certified IT courses to the Pathways trainees.



##### ▶ Job mapping for IT sector



#### RETAIL SECTOR

##### ▶ Retail Association of India (RAI)

Sol's ARC has partnered with Retail association of India (RAI), a lead trade association representing an entire gamut of retailers, from chain store retailers and department stores for developing an industry specific retail curriculum and training for differently abled adults in Retail industry.



##### ▶ Future Group

Sol's ARC has partnered with Future Retail to develop creating industry specific retail curriculum and providing supervised internships and placement support for the students with special need. Sol's ARC in collaboration with Future Group is also conducting a research study first of its kind to study better accessibility and shopping experience for people with autism at retail stores including initiatives such as 'Quiet hours' implemented globally.



#### LIFE SKILLS ACADEMY PROGRAM

Introduced life skills training for special needs adults, in collaboration with Monarch Institute, USA. The organization facilitates special needs adults by organizing meetings with a life coach on a regular basis and reviewing their progress towards their goals.



Sol's ARC Parallel School is a model school and therapy centre setup, where inclusive education and therapy are implemented for children with special needs. Services include assessments, special education, different therapies. The school offers highly individualized adaptive curriculum based on child's ability. The curriculum executed in elementary level, NIOS (National Institute of Open Schooling) and Pre NIOS-is based on NCF guidelines.

The center also provides educational support for students with special needs studying into mainstream schools.

Highlights and achievement for the year 2017 – 18 are:



June 2017 - Smart Classrooms- digital white boards CCTV Camera-security- For children as well as adults.



June 2017 - 4 students attempted NIOS Grade 10 exam this year 100% passed.



July 2017 – Special Edge pilot launch at Sol's ARC school. Our trained special educators providing inclusive learning materials & methodology to serve the needs of children with learning lags



February 2018 - An external review of Sol's ARC conducted by Adhyayan to achieve the high-quality standards of its internal systems and processes



April 2018 – A mock fire drill conducted at Sol's ARC by Andheri Fire Station team to help students and staff know the evacuating methods in the event of emergencies



Annual event celebration



Annual sports day



## Services & Projects

School > Extracurricular Activities and Event Celebrations at Sol's Arc

At Sol's ARC, students are encouraged to participate in extracurricular activities so that they not only get to interact with one another outside of their classes, but to also develop their interpersonal, problem solving and social skills. The socio-cultural events were celebrated at the center in order to provide opportunities for students to showcase their talent/skills.



**Team Building Activity** was conducted by Mrs. Sonali Saini, Founder of Sol's ARC and Ms. Farzana Badamia, Principal of Sol's ARC to ensure every child gains more than just the academic knowledge.



**Yoga & meditation classes** conducted regularly at the beginning of day to help students improve their socio-emotional health



**Dance therapy**



**Sports activities**



**Annual picnic - A day picnic to the resort**





### Therapy center: Remedial and Therapy

Our experienced and qualified therapist in Mumbai create customized therapy programs to meet every child's special needs. The goal is to provide therapy that meets high professional standards and is tailor made to enhance each child's functional abilities. Our highly individualized remedial focuses on building attention/perception skills, pre-reading & writing skills whereas the therapy program focuses to gross motor and fine motor skills, cognitive perceptual skills, sensory integration, socio-emotional skills and ADL training.



Rhea, learning maths under remedial program



Sol's ARC therapist, conducting a session on associated movements with perception by using her own version of the twister game!

## The Red Flag Project

### Project Objective:

**“To build capacity of teachers to facilitate inclusion in their learning environments” Initiated in March 2018.**

The Red Flag Project an Action Research Project initiated by Sol's ARC in partnership with Aliyavar Jung National institute aims to help teachers identify children with learning lags in their classrooms and understand the possible causes for the lags. The possible causes may be demographics, age and stage related issues, disabilities or socio emotional issues (including abuse). The project aims to build a simple App based tool that will help the teacher's red flag the possible causes and help them guide the parent and child for the next steps.



**Expert Committee Meet** on 14th March 2018: An invigorating session for the Red Flag Project was conducted with some of the leading NGO's in Mumbai. The first meeting was focussed on deciding the objectives of the Project and then on project scoping. The tool developed through the red flag project will enable teachers to identify red flags in children for learning lags and provide them simple solutions to make their classrooms inclusive.







Moving forward into 2018-19



## Special edge



Every Child **Can** Learn

### Special Edge

1. Partnership with 6 organizations in four states of Maharashtra, Rajasthan, Madhya Pradesh and Karnataka.
2. Development of inclusive remedial and adaptive content for Middle School and Whole Child Development Curriculum.
3. Implement the special edge methodology through the partners with over 2,00,000 children
4. Build capacity of the six partners and help them scale their program and improve learning outcomes of their beneficiaries.
5. Development and pilot the content management system with six partners.

## The RedFlag Project

1. Development of the Red Flag screening tool Web based App.
2. Pilot sample across 5 zones (Across India): East- West- North- South- Center. Sample size- 1000 teachers

SOL's ARC initiative

## PATHWAYS

Creating Employable Adults



## Other Partners

### ITM

Sol's Arc partnered with ITM institute as an academic partner for food industry. The teaching staff of our organization underwent a special training for Food Industry at ITM Institute. They helped in preparing a unique curriculum for the training of special needs adults. Sol's Arc also organizes regular theory classes for the trainees at their office while bi-weekly practical sessions are conducted at the ITM campus.

The organization also helped in job-mapping, where they recognized various job roles for special needs adults in the Food and Hospitality sector.



### Life Skills Academy Program

Introduced life skills training for special needs adults, in collaboration with Monarch Institute, USA. The organization facilitates special needs adults by organizing meetings with a life coach on a regular basis and reviewing their progress towards their goals.





## Volunteer Speak & Employee Connect



Shekhar Bhadu, Jan 2018

### VOLUNTEER SPEAK

Working at Sol's Arc was one of the best time I had in my life even though if it was short. It was pleasure working with Tina and Naseem, both of them are absolutely great at their work and everyone around creates a happy atmosphere to work under. I was happy to get this opportunity and I also appreciate the influence this place had on me in terms of my professional and personal development. This organization will grow bigger and has a lot of potential and I hope I get a chance to work with this organization once again in my life.

### EMPLOYEE CONNECT



Employee Picnic at Lonavala, 9th Feb 2018

Team Sol's ARC had their employee picnic at Supreme Resort, Lonavala. There were a number of activities arranged for the employees. The day was filled with loads of fun and uncountable memories. Everyone had a wonderful time and can't wait for the next one!

Fun Fridays is a weekly activity initiated to connect the employees together from different departments through fun and frolic activities.



Fun Fridays



## Financial Performance

2016-2017		2017-2018		2016-2017		2017-2018	
FUNDS AND LIABILITIES				PROPERTY AND ASSETS			
<b>Trust Funds or Corpus</b>				<b>Immovable Properties</b>			
10000	As per last year	10000		0			0
0	Add: During the year	0		1047179	<b>Fixed Assets</b>		1238937
10000		10000	10000		(As per Annexure A)		
<b>Other Earmarked Funds:</b>				<b>Investments</b>			
<b>(Created under the provisions of trust deed)</b>				214556			
0	Depreciation Fund	0			<b>Loans</b>		
0	Sinking Fund	0		0	Loans Scholarship		0
0	Reserve Fund	0		0	Other Loans		0
3026798	Any other Fund	3276568			<b>Advances</b>		
<b>Loans (Secured or Unsecured)</b>				0			
	From Trustee	0		0	To trustees		0
0	From Others	0		0	To employees		0
<b>Liabilities and Provisions</b>				177502			
587477	For Expenses	865159		0	To contractors		0
380000	For Deposits	560000		0	To lawyers		0
0	For rent and other deposits	0		0	To Others		205709
0	For sundry credit balances	0			<b>Deposits</b>		0
<b>INCOME AND EXPENDITURE ACCOUNT</b>				<b>Cash and Bank Balances</b>			
				(in name of the trust)			
230573	Balance as per last year	1042297		8797	Cash in hand		7619
805724	Add: Excess of income over expenditure during the year	2696785		0	Fixed Deposit		0
1042297		3739082	3739082	3598538	Cash with Banks		6784891
5046572	<b>TOTAL RS.</b>	<b>8450809</b>	<b>5046572</b>		<b>TOTAL RS.</b>		<b>8450809</b>

The above Balance Sheet to the best of our belief contains a true account of the Funds and Liabilities and of the property and Asset of the Trust.

AS PER OUR REPORT OF EVEN DATE

FOR S. P. GUPTA & ASSOCIATES

CHARTERED ACCOUNTANTS

F.R.No.103445W

Partner

Shashikant Gupta

Mem.No.031899

Place : Mumbai

DATE : 25/08/2018



FOR SOL'S ASSESSMENT AND REMEDIAL CENTRE (SOL'S ARC)  
For Sol's Assessment And Remedial Centre (Sol's ARC)

Trustee

Trustee

Trustee.

Place : Mumbai

DATE : 25/08/2018



## Financial Performance

2015-2016		2017-2018		2016-2017		2017-2018	
EXPENDITURE				INCOME			
	To Expenditure in respect of properties			0	By Rent		0
0	Rates , Taxes , cesses				By Interest (accrued & realised )		
0	Repairs and Maintenance			0	On Securities		0
0	Salaries			0	On Loans		0
0	Insurance			199279	On Bank account		242978
0	Depreciation			0	On Fixed Deposit		16619
687381	To Establishment expenses			1542800	By Dividend		0
0	To Legal Expenses			4695621	By Donation		3145028
14374	To Audit fees	59000		3375044	By Grant		8722944
0	To Contribution and fees			0	By Other Income		2884900
	To Amounts Written off				By Transfer from Reserve		790000
0	(a) Bad Debts						
0	(b) Loans Scholarships						
0	(c) Irrevocable rents						
0	(d) Other items						
0	To Miscellaneous expenses						
200605	To Depreciation	258950					
	To Expenditure on objects of the trust:-						
	(a) Religious	0					
5104000	(b) Educational	12787734					
	(c) Medical Relief	0					
	(d) Other Charitable Objects	0					
		12787734	12787734				
805724	Excess of Income over Expenses	2696785					
	Carried to Balance Sheet						
9812744		15802468	9812744				15802468

AS PER OUR REPORT OF EVEN DATE

FOR S. P. GUPTA & ASSOCIATES  
CHARTERED ACCOUNTANTS

F.R. No.103445W

*S. P. Gupta*

Partner  
Shashikant Gupta  
Mem No.103445W



Place : Mumbai  
DATE : 25/08/2018

FOR SOL'S ASSESSMENT AND REMEDIAL CENTRE (SOL'S ARC)  
For Sol's Assessment And Remedial Centre (Sol's ARC)

*[Signature]*  
Trustee

*[Signature]*  
Trustee

Place : Mumbai  
DATE : 25/08/2018