



ANNUAL REPORT 2016-17



Contents

| | |
|-----------------------------------------------------|-----------|
| Message from the Founder Director | 01 |
| About us | 02 |
| Sol's ARC Rebranding | 03 |
| Services and Projects | 04 |
| Services | 05 |
| Projects | 07 |
| Special Edge Impact | 08 |
| Pathways – Vocational Training Program | 12 |
| IT Enablement of Sol's ARC | 14 |
| Audited Financial Statements 2016-17 | 15 |



Every Child **CAN** Learn...
Just not on the same day
or the same way!

Sonali Saini
Founder Director

A Dream becomes Reality!

Everything that we have been working towards since the past three years is now becoming a reality. Since 2013 when we first rebuilt our vision of "No Child Left Behind" the vision has started taking shape in real world.

2016-2017 has been a year of shift for Sol's ARC. From reaching out to 6000 children in Mumbai in the past 13 years to now reaching out to 25000 children in Rajasthan and Maharashtra in 2016-17, this journey has been anything but easy. A new vibrant team has joined Sol's ARC. The project which was earlier called QUEST is now renamed as Special Edge implying principles of special education being used for achieving an edge in learning. Its been a year of learning and relearning and learning and relearning.....and we know we can and we will transform education by reaching out to the very last child.

A strategic plan for the next 3 years, 2017-2020 has been drawn out with the help of experts. Sol's ARC aims to reach 1 million children through strategic partnerships by the end of 2020.

Sol's ARC is a registered non-profit organization established in 2003, under the Charitable Trust Act of Mumbai, working towards transforming education. We conduct innovative education research to build inclusive learning content, ensuring every child can learn and that our innovation will reach the last mile.



Our Journey

2003

- Registered as Charitable Trust

2004-06

- Started with remedial therapy
- Within a year extended to other services

2007-09

- Started branch in Kandivli, Mumbai (1st)
- Started India's 1st parallel school offering curriculum for children with learning lags
- Began research and curriculum development

2010-13

- Started branch in Byculla, Mumbai (2nd)
- Consultation and training for school and other organisations

2013-15

- Pilot studies conducted
- Project validation with National and International Agencies
- Focus on capacity building
- Started testing curriculum for a wider audience with good results

2016-17

- Standardisation of primary level curriculum
- Partnership with 2 organisations for scaling curriculum to reach out 25000 children in states of Maharashtra and Rajasthan

6000 Children Reached directly through our centre

25000 Children Reached through partnerships

Sols' ARC Presence in two states, Maharashtra and Rajasthan



Vision

No Child Left Behind.



Mission

Universalise educational opportunity for all children in India, through appropriate research based inclusive pedagogy, training & delivery.



Goal

To create a scalable replicable model to reach every last child.

To commemorate the new journey, we undertook the process of designing new logo that will embrace our vision of "No child Left Behind". The logo retains the sun and the Arc of the earlier logo while representing the rising sun that spreads joy in the lives of individual with special needs. It also depicts the image of an individual wearing a graduation hat, indicating achievement of the educational milestone and opening opportunities for employability.

The collage features three logos. The top left logo is the original Sol's ARC logo, consisting of a black diagonal line above an orange circle, with the text "Sol's ARC" in orange and black, and "Transforming Education" below. The top right logo is "Special edge", with "Special" in black and "edge" in orange, above a black arc with a small orange dot at its peak, and the text "Sol's ARC initiative" and "Every Child Can Learn" below. The bottom logo is "PATHWAYS", with "Sol's ARC initiative" above, "PATHWAYS" in large black letters with an orange underline, and "Creating Employable Adults" below.

What we
are now

Where
we were

The new logo features a stylized sun with a yellow-to-orange gradient and white rays. Below it, the text "Sol's ARC" is written in a large, bold, orange font, with "Transforming Special Education" in a smaller, black font underneath.

Sol's ARC



Services



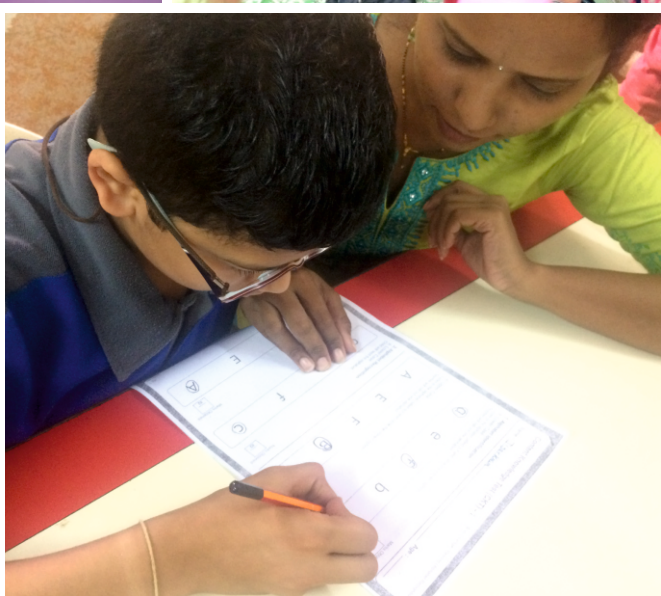
Projects

School

Therapy

Special Edge

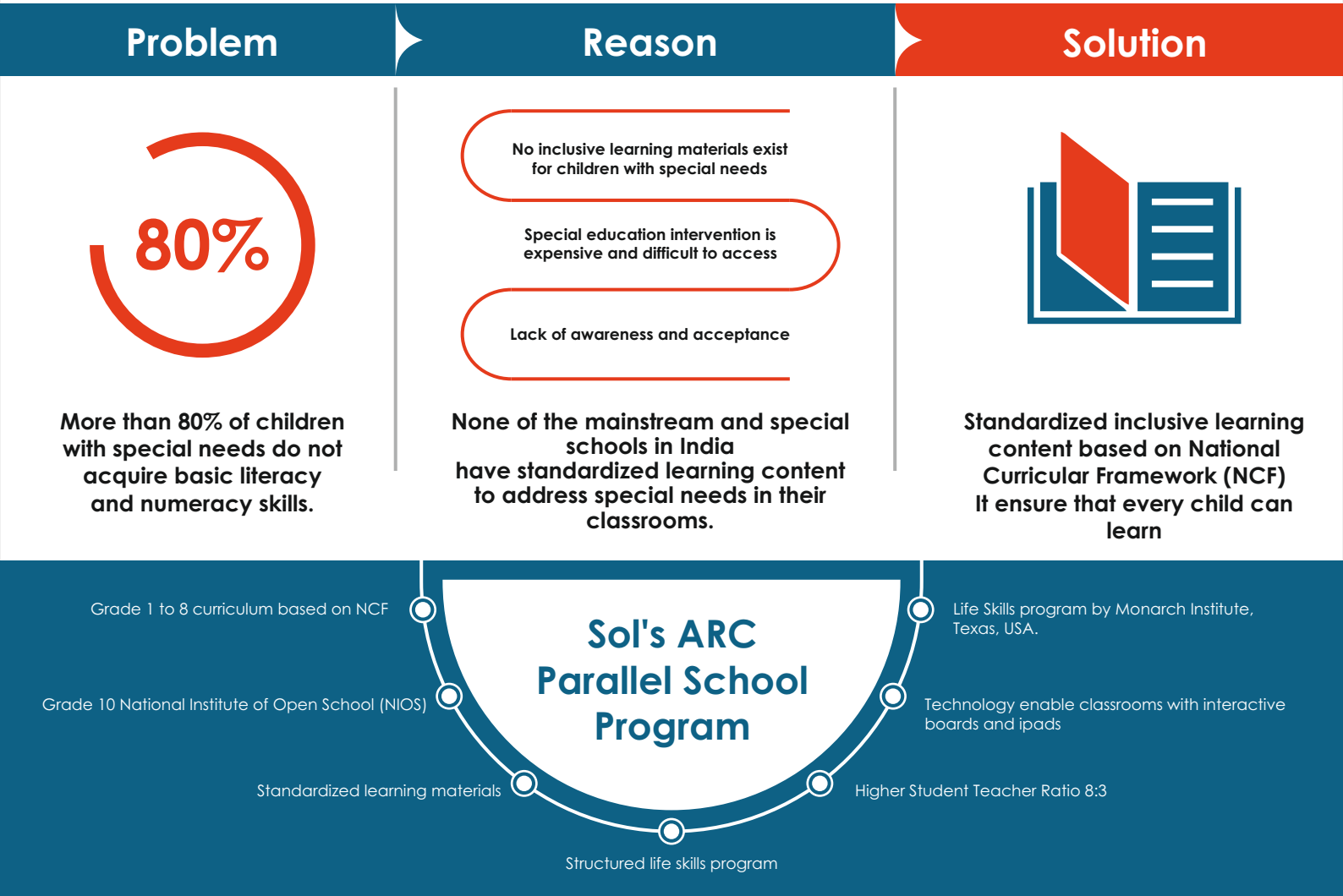
Pathways



Sol's ARC Parallel School and Therapy Centre is a model school and therapy centre setup, where inclusive education and therapy are implemented for children with special needs.



Parallel School



Therapy Centre

Our experienced and qualified therapists in Mumbai create customized therapy programs to meet every child's special needs. The goal is to provide therapy that meets high professional standards and is tailor-made to enhance each child's functional abilities.





Special Edge (Earlier know as QUEST)

Special Edge is a partnership program that offers inclusive learning materials and methodology that can be implemented in a classroom to address needs of children with learning lags. Special Edge content is based on National Curriculum Framework (NCF) 2005 thus making it acceptable across India.



Special Edge Partnership Program

Sol's ARC partners with

Government & Non-government Organization

Leadership & Capacity Building Organization

Mainstream Schools

Special Schools

To provide



Inclusive learning materials



Program Framework



Training



Monitoring & Evaluation

In 2016-2017 Sol's Arc has partnered with 2 organizations to reach out to more than 25000 children in Rajasthan and Maharashtra.-



1. Educate Girl

Educate Girls is an NGO that works in rural Rajasthan in over 8000 schools to reach out to over a million children. Their focus is on improving enrollment of girl child and improving learning outcome of all children through community ownership.

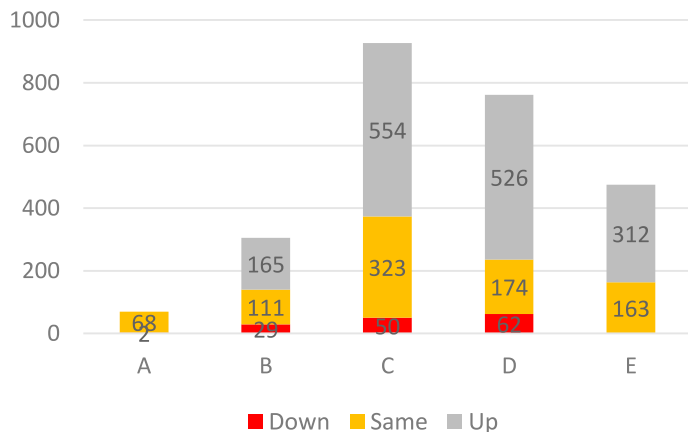
Sol's ARC through their partnership with Educate Girls has become part of World's first Development Impact Bond (DIB)*, responsible for learning outcomes for Educate Girls. The Development Impact Bond (DIB) is a pioneering new way to encourage private investors to fund international development projects that is 100% focused on the outcomes achieved. It aims to help improve education for 18,000 children in Rajasthan, India.

Sol's Arc built their program framework, learning content and trainings and implemented the program with the community volunteers, Team Balika in over 166 schools in Bhilwara, Rajasthan in Jan 2016 to March 2017.

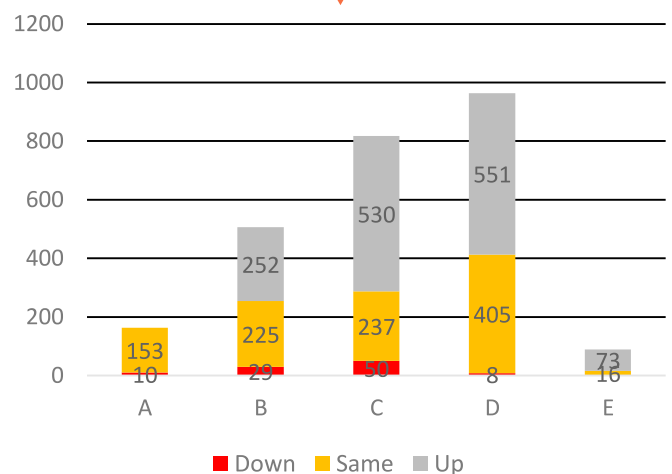
The following results were obtained through a year of intervention and implementation-

The grade gains more than tripled from the last year of implementation before Sol's ARC intervention.

Student movement by Grade - English



Student movement by Grade - Math



Overall student grade gain increase by 55%

Overall student grade gain increase by **55%**



2. Jai Vakeel Special School

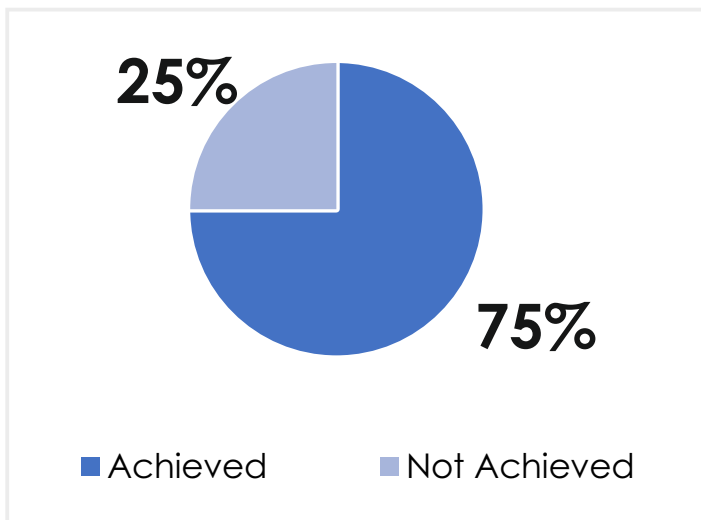
Jaivakeel Special School is one of India's oldest and biggest special schools catering to over 700 children with multiple disabilities in Mumbai.

The Jai Vakeel intervention consisted of making informal teacher materials and developing Classroom Educational Plans and training teachers to measure and improve learning outcomes of about 100 children with multiple disabilities across the classrooms. Post Porticus funding we began testing the developed standardised gradewise materials with the same population. This is a population of children with almost non-existent skills in basic literacy and numeracy.

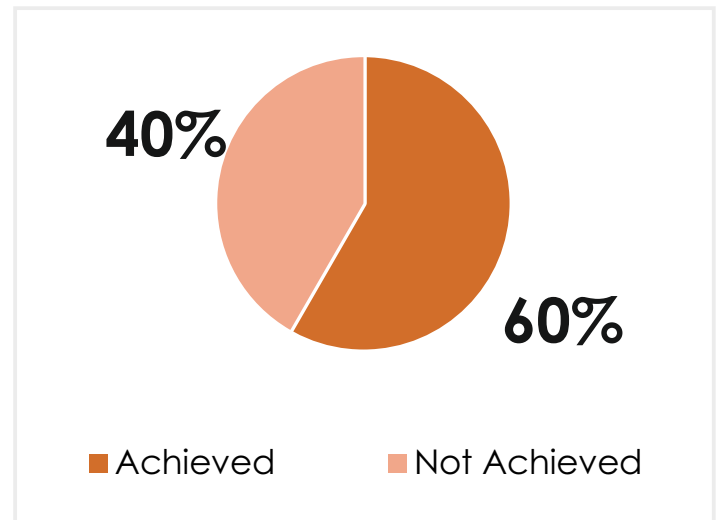
The results of 1 year of intervention were extremely high thus proving our theory that all children can learn and at a comparable pace of learning provided the intervention is structured and focused.

The results given below are the skills the children were able to attain in comparison to regular grade levels.

Math Grade 1 Equivalency

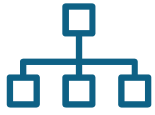


English Grade 1 Equivalency



More than 65% of students gained Grade 1 appropriate skills in one year of intervention

What's next in Special Edge?



Phase wise content completion (primary and secondary)



Phase wise Digitization of content



1 million beneficiaries by 2020



Advocacy for inclusive policies

Partners Till 31st March 2017

1. Educate Girls
2. Jaivakeel Foundation and Research Centre
3. ICMH
4. Aseema
5. St. Catherine of Siena school and orphanage



Pathways is a 3-year Associate Vocational Degree Program with academic and industry certification, providing a career path for young special needs adult.



Problem

Reason

Solution

80%

80-90 percent of the developmental disability adults of working age are unemployed!

Lowest education attainment

Poor social and life skills

No recognized certification from the industry or Government

Inclusive content mapped to industry needs

Life skills program for independent adult life

Industry and academic certification

What will we do in Pathways?



Job mapping & curriculum development



Accreditation from academic & Industry partners

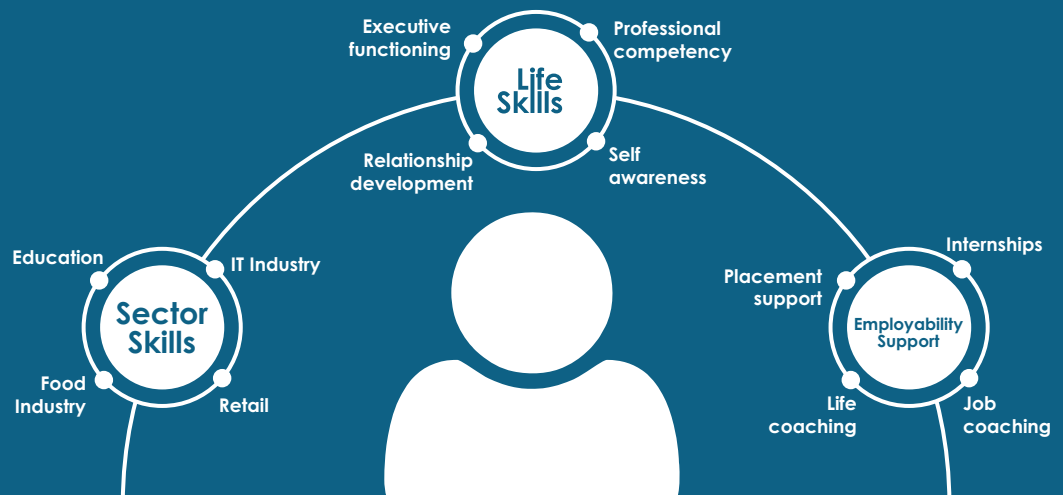


Industry engagement & mentoring

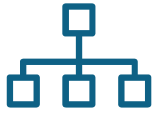
Pathways Program

The program provides an opportunity to develop skills in four sectors, Food Industry, Information Technology, Education and Retail. Simultaneously the student will also gain life and social skills with the support of a life coach.

The students and parents will be connected to placement agencies for employment opportunities.



What's next in Pathways? (2017-20)



Sector Mapping
Completion



Building inclusive
curriculum &
standardization



Industry & academic
certification



Scaling through
partners

Mapping Partners

1. Sodexo
2. Chef Sanjeev Kapoor's Yellow Chilli's Restaurant
3. Lilavati Hospital



Sol's ARC, during the period of 2016-1017, become a smart technology enabled organization including.



- Smart Classrooms- digital white boards
- CCTV Camera- security- For children as well as adults.
- EPABX for communications- Telephone lines included for internal intercom
- Biometrics recognition for staff – To monitor attendance.
- Gate security system- safety for children who tend to walk about or walk away
- I-pads



The Bombay Public Trusts Act, 1950

SCHEDULE IX [Vide rule 17(1)]
SOL'S ASSESSMENT AND MEDICAL CENTRE
 Registration no. F - 25351(Mumbai)

INCOME AND EXPENDITURE ACCOUNT FOR THE YEAR ENDED 31ST MARCH 2017

| 2015-2016 | EXPENDITURE | 2016-2017 | 2015-2016 | INCOME | 2016-2017 |
|-----------|-------------------------------------------------|-----------|-----------|-----------------------------------|-----------|
| | To Expenditure in respect of properties | | 0 | By Rent | 0 |
| 0 | Rates , Taxesa , cesses | 0 | 0 | By Interest (accrued & realised) | |
| 41511 | Repairs and Maintenance | 0 | 0 | On Securities | 0 |
| 0 | Salaries | 0 | 0 | On Loans | 0 |
| 0 | Insurance | 0 | 64918 | On Bank account | 199279 |
| 0 | Depreciation | 0 | 0 | By Dividend | 0 |
| 0 | To Establishment expenses (Annexure : B) | 687381 | 205144 | By Donation in cash | 1542800 |
| 0 | To Legal Expenses | 0 | 0 | By Grant | 4695621 |
| 0 | To Audit fees | 14374 | 3295201 | By Income from other source | 3375044 |
| 0 | To Contribution and fees | 0 | 0 | By Transfer from Reserve | 0 |
| | <u>To Amounts Written off</u> | | | | |
| 0 | (a) Bad Debts | 0 | | | |
| 0 | (b) Loans Scholarships | 0 | | | |
| 0 | (c) Irrevocable rents | 0 | | | |
| 0 | (d) Other items | 0 | | | |
| 700000 | To Miscellaneous expenses | 0 | | | |
| 53092 | To Depreciation | 200605 | | | |
| | <u>To Expenditure on objects of the trust:-</u> | | | | |
| 0 | (a) Religious | | | | |
| 0 | (b) Educational | | | | |
| 2210402 | © Programme Expenses (Annexure : C) | 8104660 | | | |
| 0 | (d) Other Charitable Objects | 0 | | | |
| | | 8104660 | 8104660 | | |
| 560258 | Excess of Income over Expenses | 805724 | | | |
| | Carried to Balance Sheet | | | | |
| 3565263 | | 9812744 | 3565263 | | 9812744 |

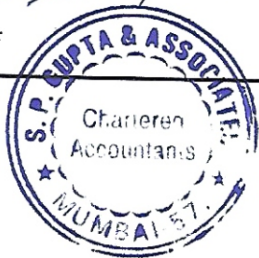
AS PER OUR REPORT OF EVEN DATE

FOR S. P. GUPTA & ASSOCIATES
 CHARTERED ACCOUNTANTS

S. P. Gupta

Partner

DATE: 31-08-2017



FOR SOL'S ASSESSMENT AND MEDICAL CENTRE

For SOL'S ARC TRUST

S. P. Thorat

President, Secretary / Treasurer
 TRUSTEES

Our Supporters



**SOL'S ASSESSMENT AND MEDICAL CENTRE
Foreign Contribution Fund
Balance Sheet As At 31st March, 2017**

| PARTICULARS | chedu | As at 31st March, 2017 (Rupees) | As at 31st March, 2016 (Rupees) |
|-----------------------------------------------------------------------------------|-------|------------------------------------|------------------------------------|
| Funds & Liabilites | | | |
| Foreign Contribution Fund | 2 | 171,334 | - |
| Unutilised Grants | | 2,176,798 | |
| Current Liabilities | | | |
| Sundry Creditors | | 328,659 | - |
| Total | | 2,676,791 | - |
| Assets | | | |
| Cash and Bank Balances | | | |
| Balance with Scheduled Bank | | | |
| -In Current Account | | 2,674,391 | |
| -In Fixed Deposit | | - | - |
| Cash In Hand | | 2,400 | |
| Total | | 2,676,791 | - |
| Significant Accounting Policies and Notes to Accounts (As per Schedule 1 to 2) | | - | - |

As per our attached Report of even date

The schedule referred above forms an integral part of this Balance Sheet

As per report of even date attached
For S. P Gupta & Associates
Chartered Accountants
F.R. No. 103445W

For SOL'S ASSESSMENT AND MEDICAL CENTRE

Partner
Shashikant Gupta
Mem. No. 031899



Place : Mumbai
Date : 31/08/2017

[Signature]
President, Secretary / Treasurer

Trustee

Trustee

Place : Mumbai
Date : 31/08/2017